

SharePoint List Synchronizer for Excel 2007 and 2010

Documentation

Table of Contents

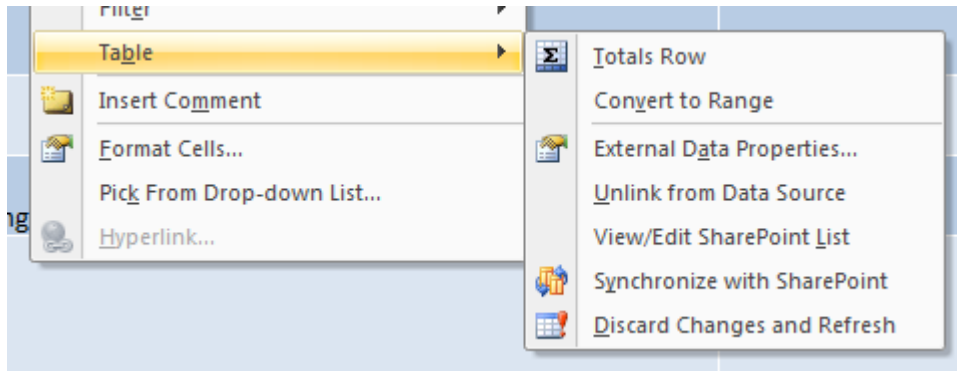
I.	INTRODUCTION	3
II.	OVERVIEW	4
III.	INSTALLATION	5
IV.	UNINSTALLATION	9
V.	USAGE.....	10
	A. SCENARIO.....	10
	B. BASIC AUTHENTICATION OVER NON-SSL HTTP CONNECTIONS.....	11
VI.	SUPPORT	13

I. Introduction

In **Microsoft Office Excel 2003**, you can connect to (read from) and update (write to) lists that reside on SharePoint sites. This allows you to keep the information in your Excel 2003 tables synchronized with the information that appears on the SharePoint site.

In **Microsoft Office Excel 2007** and **Microsoft Office Excel 2010**, the ability to update the information in SharePoint lists from Excel is deprecated. Instead, **Microsoft Office Access** is the recommended platform for writing data to SharePoint lists and for using lists offline.

However, the **SharePoint List Synchronizer for Excel 2007 and 2010**, presented here, addresses this issue and allows Excel users to open SharePoint Lists in two-way sync.

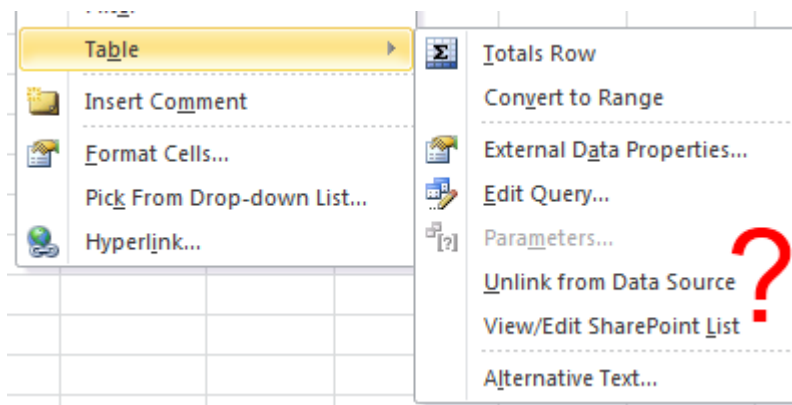


II. Overview

In Office Excel 2007 and 2010, the ability to update SharePoint lists changed in the following ways:

- Opening a list from SharePoint with Excel 2007 or 2010 disables the "Synchronize with SharePoint" feature.
- Existing .XLS files from Office Excel 2003 still load and continue to support update functionality when opened in Excel 2007 or 2010.
- Lists that link to a SharePoint site are converted to read-only tables when you save existing files to the new Open XML Excel 2007 or 2010 file formats.

Meanwhile, Microsoft published an add-in which allows users to publish new read-write lists in SharePoint ([Excel 2007 Add-in: Synchronizing Tables with SharePoint Lists](#)). While this add-in works great to publish new Excel tables to SharePoint, it doesn't address the issue of lists exported from SharePoint. For example, every time you export your SharePoint list to Excel 2007 and 2010; all changes applied in Excel cannot be synchronized back with the original list anymore, instead you need to apply those changes manually or use Microsoft Office Access. The "Synchronize with SharePoint" menu has disappeared:



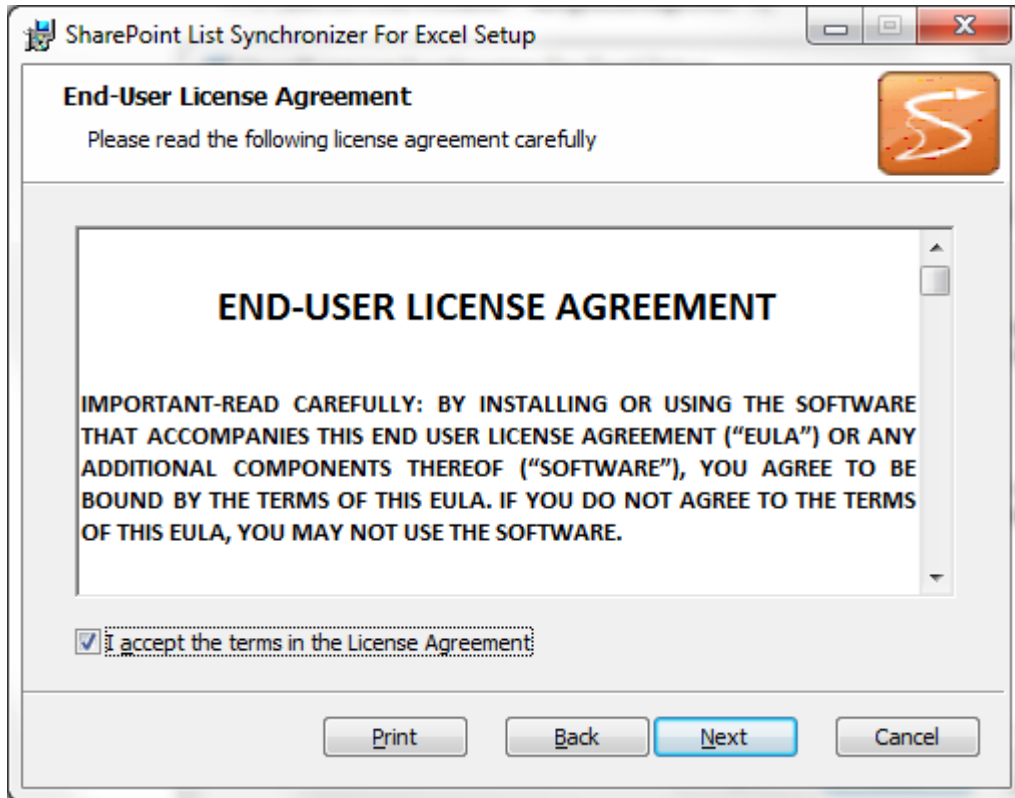
Well, thanks to the **SharePoint List Synchronizer for Excel 2007 and 2010**, this scenario is now possible in Excel again: you can export your list to Excel 2007 and 2010, and synchronize back to SharePoint without any extra-effort!

III. Installation

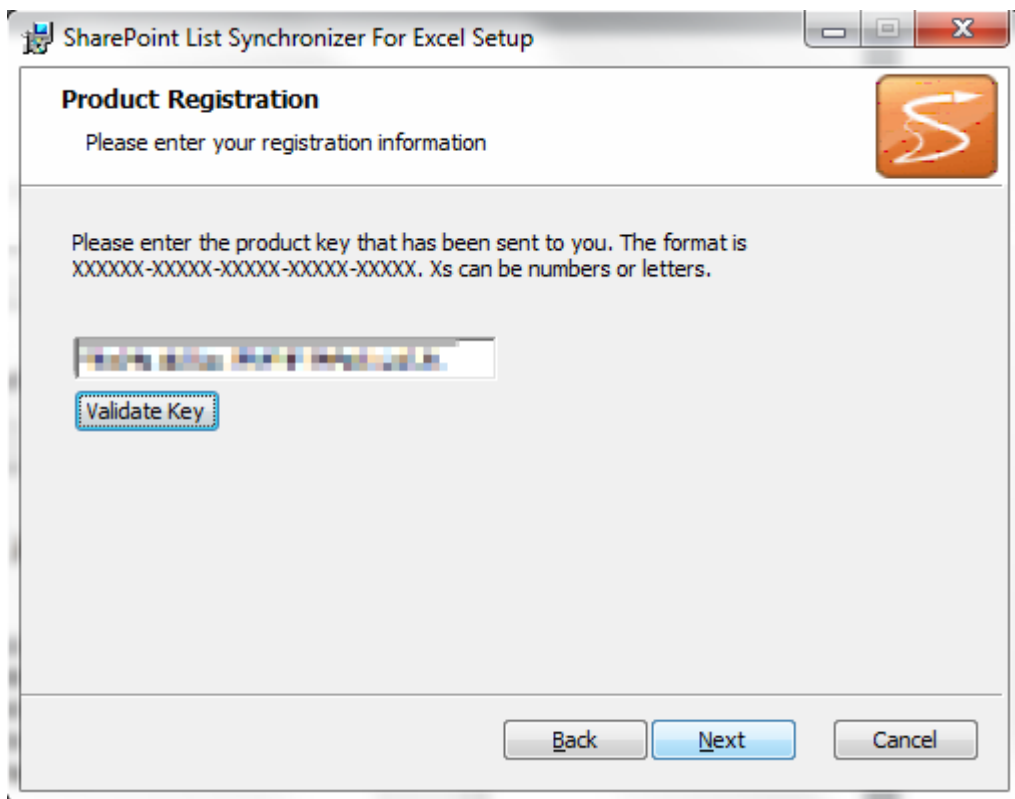
- Download the installer: <http://www.softfluent.com/products/sharepoint-list-synchronizer>
- Launch the installer “XISyncSetup.msi”:



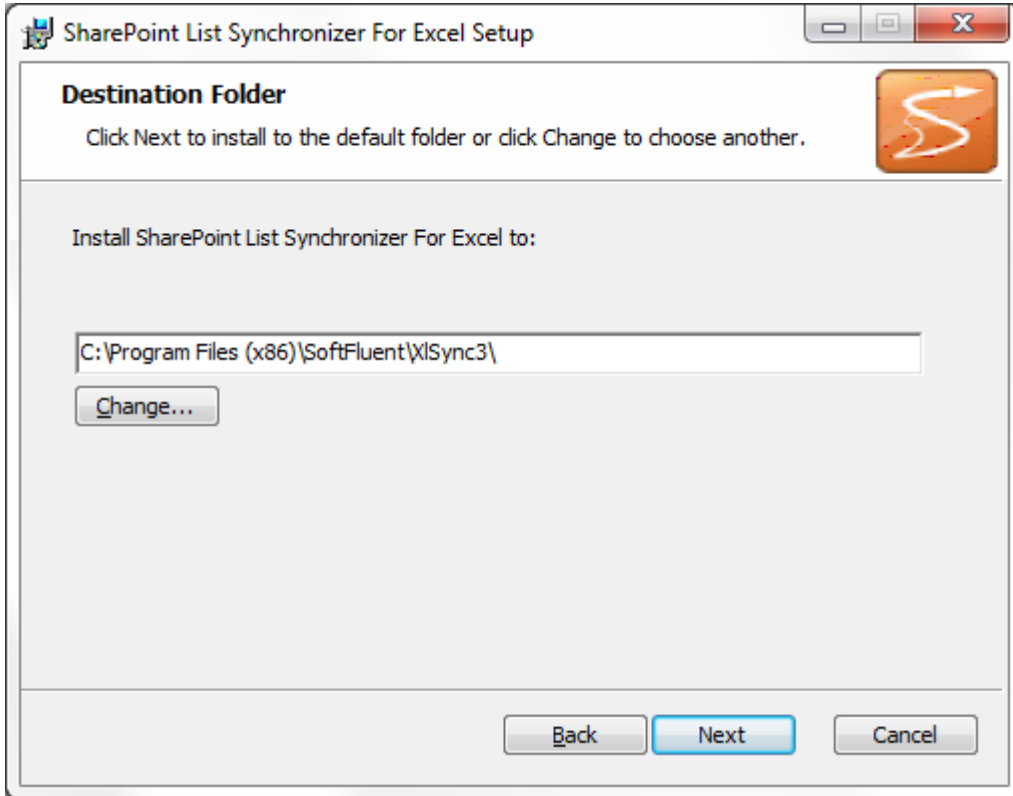
- Click “**Next**”, then read and check “**I accept the terms in the License Agreement**”, and hit “**Next**” again



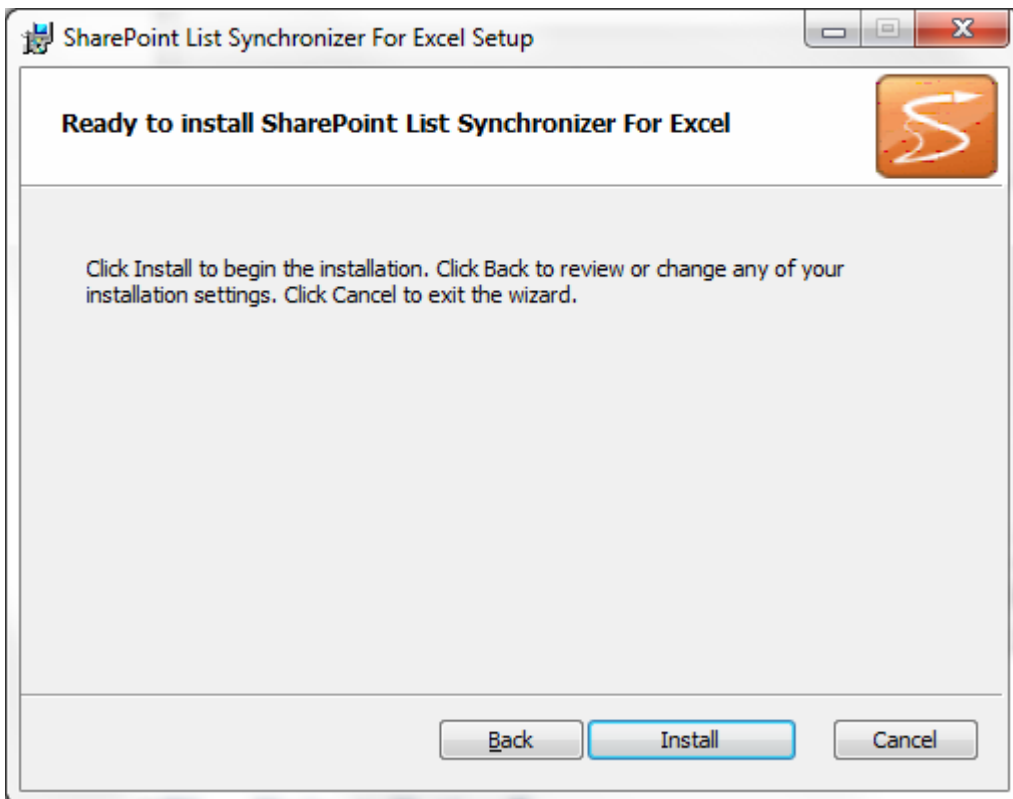
- Type-in your license key, click on **“Validate Key”**, and **“Next”**



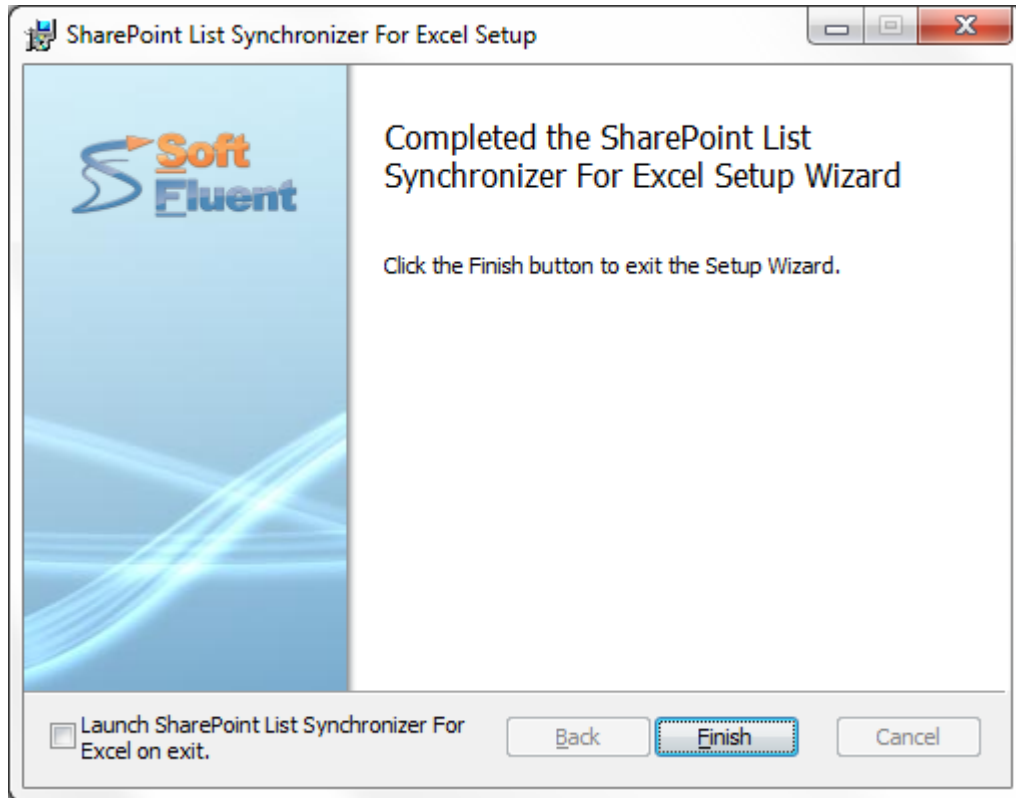
- Select your destination folder



- Click **“Install”** to install the application on your machine



- The application will be deployed to the destination folder, and upon completion the following form will show up:



Silent Installation

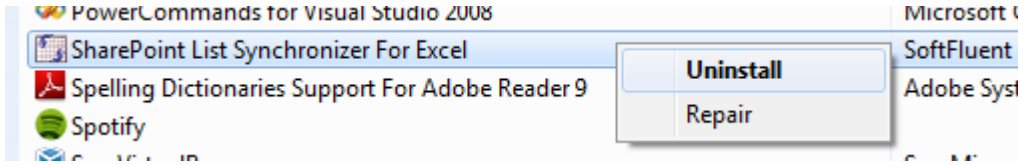
To install the tool silently you can use the following command line:

```
$>msiexec /i XLSyncSetup.msi /qn XLSYNC_KEY=<provided key>
```

Note: Don't forget to replace the "<provided key>" tag by your actual key.

IV. Uninstallation

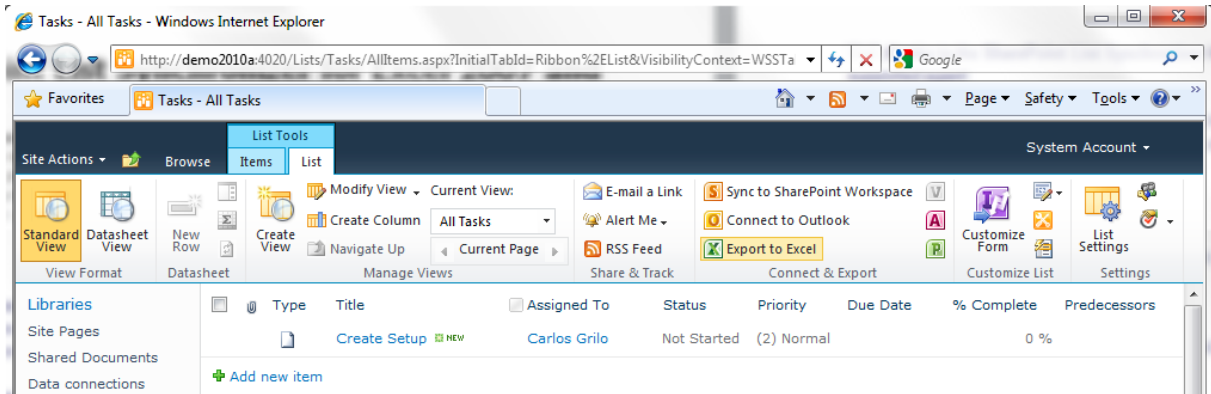
- Go to your **Control Panel > Programs and Features**, select the **“SharePoint List Synchronizer For Excel”** program, right-click on it and select **“Uninstall”**



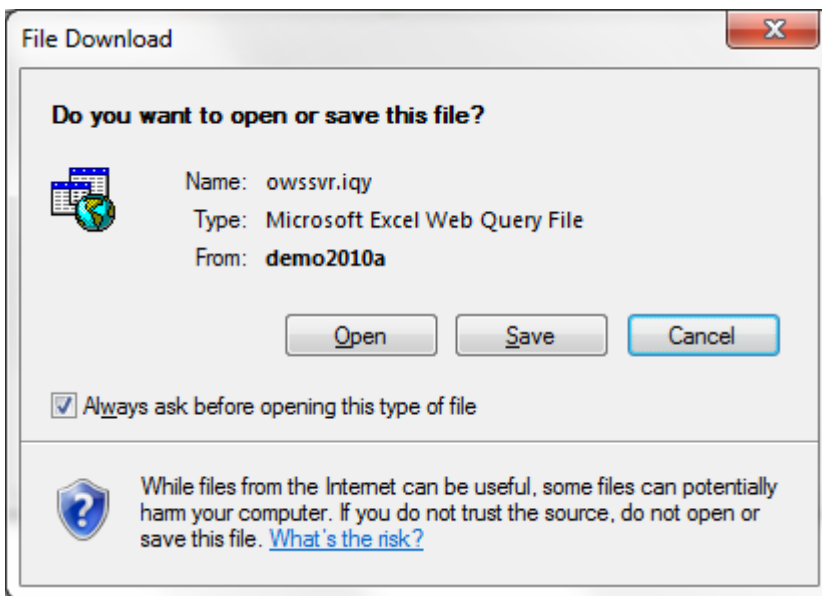
V. Usage

A. Scenario

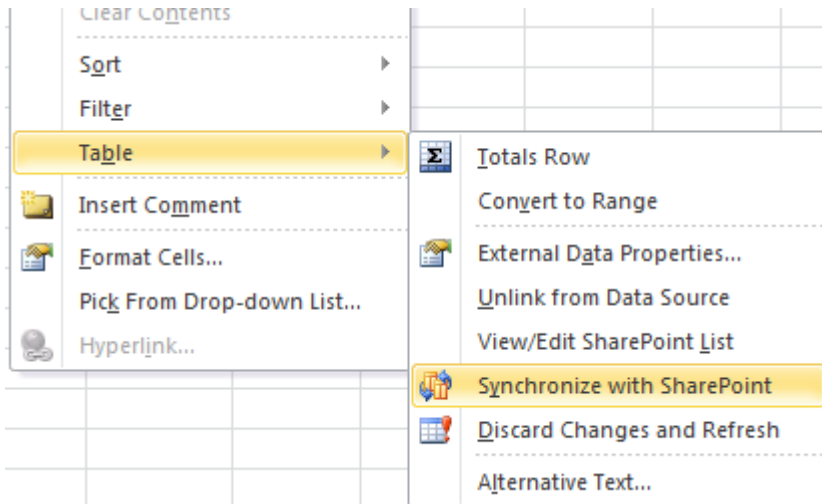
- With the tool installed, go to your favorite SharePoint site and go to a SharePoint List.



- Click on “Export to Excel”.



- Click on “Open”, and Excel will open the list however this time with the “Synchronize with SharePoint” option activated!

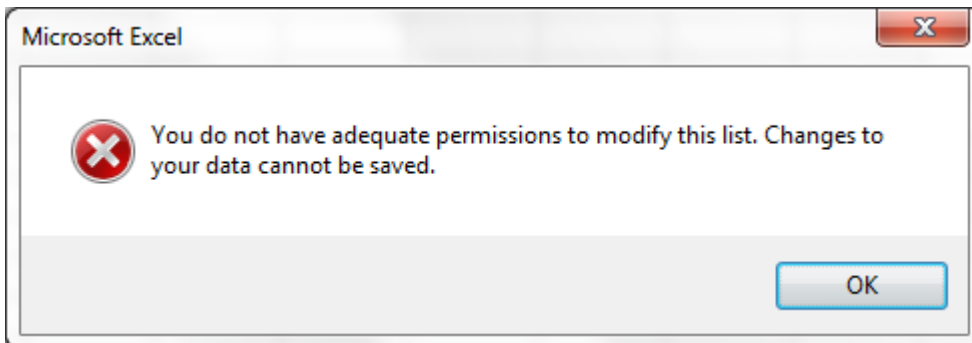


Note: In order to retain the functionality for this table across saves, you need to save the workbook in the Excel 2003 .XLS file format.

B. Basic authentication over non-SSL HTTP connections

By default, **Microsoft Excel 2010** doesn't prompt for user name and password when accessing basic authentication over non-SSL (HTTP instead of HTTPS) protected sites.

Therefore, when trying to access a list on one of those access protected sites results in the following error:



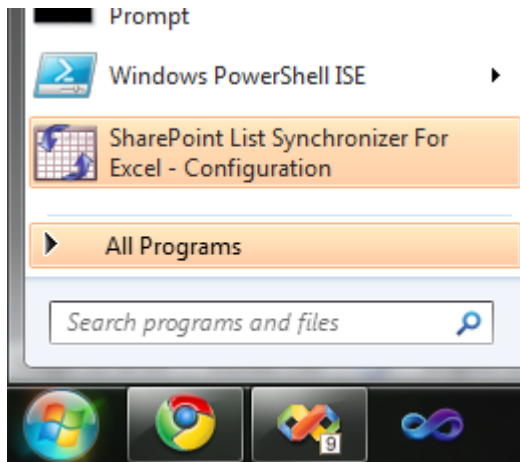
The SharePoint List Synchronizer for Excel supports such scenario thanks to its “**Basic authentication over non-SSL connections**” feature.

In a nutshell, activate this feature if:

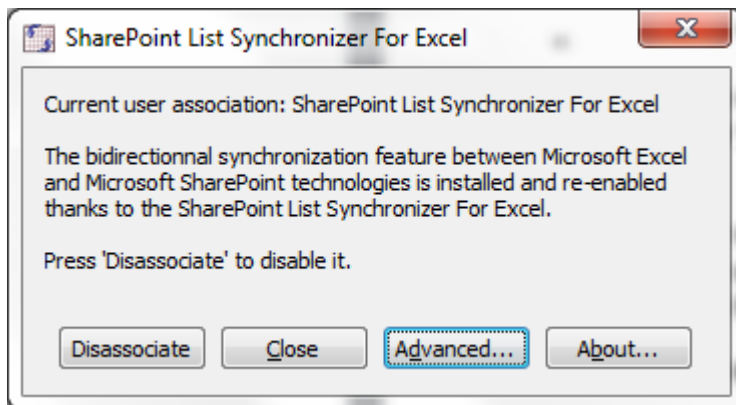
- You're using Microsoft Excel 2010,
- You're using SharePoint Lists hosted on a site with basic authentication activated over non-SSL HTTP connections.

To activate the feature:

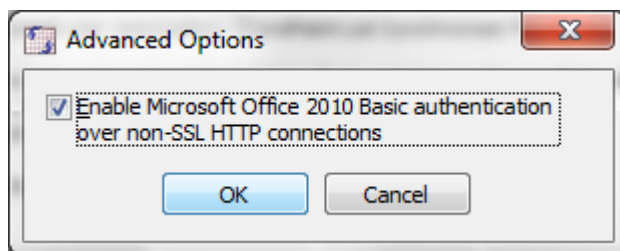
- Launch “**SharePoint List Synchronizer For Excel - Configuration**” from the start menu



- Click on “Advanced”



- Then check “**Enable Microsoft Office Excel 2010 Basic authentication over non-SSL HTTP connections**”, click “OK” and close the application.



Note: To disable the feature, repeat the same steps and uncheck it.

By activating this feature through our tool, Excel will now prompt users for their credentials and pass them to the site. This way, Excel 2010 users will be able to open SharePoint Lists from access protected sites in two-way sync over again.

VI. Support

Experiencing some difficulties? Free support is available via email at support@softfluent.com and through our [forums](#).